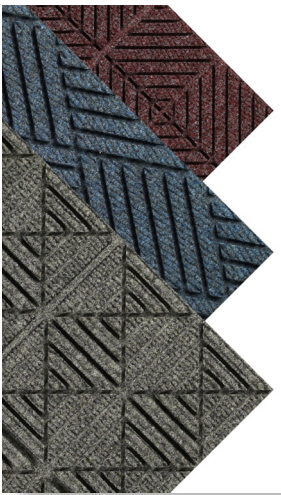


WaterHog[®] Max Tiles

Scraper/Wiper Mats • Indoor/Outdoor

WaterHog Max Tiles are designed to provide scalable flooring solutions for large areas.



- **Clean & Dry** – Bi-level surface effectively scrapes dirt and moisture from shoes, trapping it beneath shoe level to prevent tracking
- **Durable** – Reinforced rubber nubs prevent pile from crushing and extend the performance life of the mat
- **Fade & Stain Resistant** – Solution-dyed PET fabric (30 ounces per square yard) is resistant to staining, dries quickly, and will not fade or rot
- **Safe** – Certified high-traction by the National Floor Safety Institute (NFSI)
- **Eco-Friendly** – PET fabric is made from at least 90% recycled content reclaimed from plastic, and SBR rubber backing contains 20% recycled rubber from car tires
- Available in 7 colors with choice of 3 patterns: diamond, diagonal, or geometric
- Ideal for surface or recessed installations; worn or damaged tiles can be easily replaced
- Available with 100-mil (1/4") SBR cleated rubber backing
- Tiles can be installed inside or outside; solvent-free adhesive is required for installation (sold separately)
- Vinyl nosing available for border (sold separately)



Black Smoke



Chestnut Brown



Grey Ash



Indigo



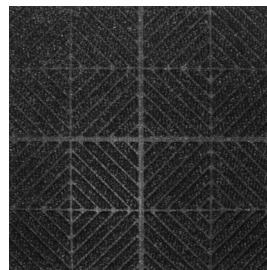
Khaki



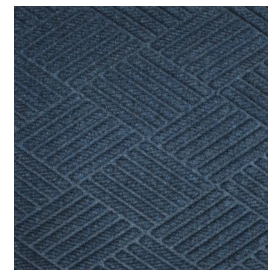
Maroon



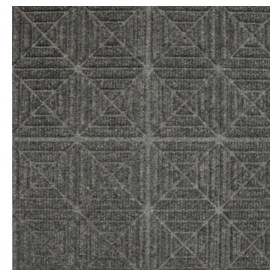
Southern Pine



Diagonal Pattern



Diamond Pattern

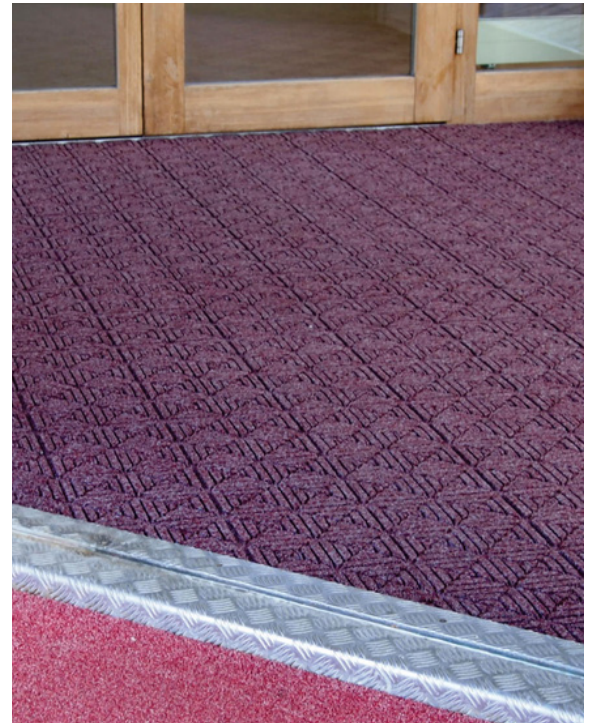


Geometric Pattern

Colors may vary due to inconsistencies of various display monitors or printers (if you're viewing a printed version of this document). Color images are intended to be used as a guide only.

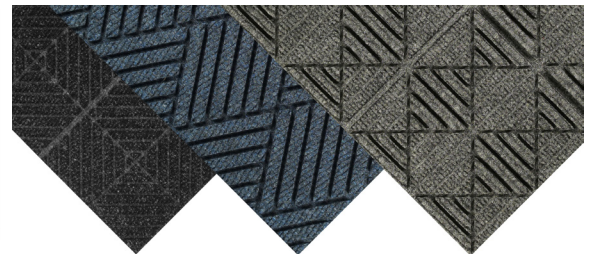
WaterHog® Max Tiles

Scraper/Wiper Mats • Indoor/Outdoor



Product No. 2217 - Diagonal Pattern
 Product No. 2218 - Diamond Pattern
 Product No. 2215 - Geometric Pattern

Size (in.)	Thickness	Tiles per case	Weight per case	Sq. ft. per case
18" x 18"	1/4"	12	29 lbs.	27 sq. ft.




edgewood
uniquely better

quoterequest@edgewoodgroup.ca