



matting / athletics / flooring

## DEBRIS TRAP TILE INSTALLATION

### INSTRUCTIONS OVERVIEW

This installation guide is intended to provide the necessary information for the proper installation of Debris Trap Tile goods. These instructions are believed to be based upon accepted industry standards and are provided for informational use only. Edgewood Matting Ltd. does not warrant any installation performed pursuant to these instructions or otherwise and specifically disclaims liability for any direct or indirect personal injury, property damage or other costs or losses resulting from installation. Debris Trap Tile goods should be installed by qualified and experienced personnel.

### UPON DELIVERY OF PRODUCT

1. Verify packing slip matches for product, color, size and quantity
2. Inspect delivered product thoroughly. Report any discrepancies of original order, product defects, etc. NO reimbursements/warranty claims will be given for labor on material installed with visual defects. Any defects, size, color, or otherwise, must be reported to the place of purchase prior to installation.
3. Store product and adhesives in clean, dry environment with temperatures between 21° – 35°C (70° - 95°F).
4. Read product and floor preparation, instructions, warranty and other disclaimers carefully and completely before beginning any installations.

### INSTALLATION

#### Tools Needed:

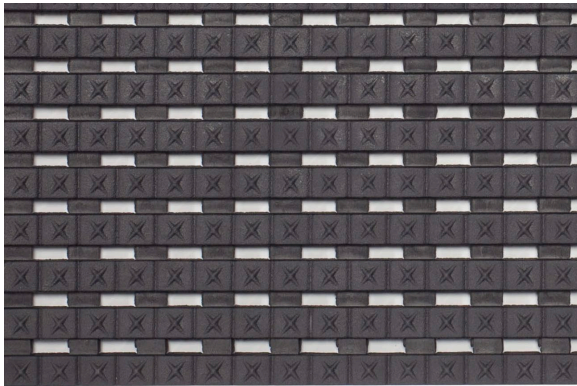
- Rubber mallet
- Tape measure
- Straight edge
- Sharp cutting knife (Olfa with snap-off blades recommended)
- Philips screwdriver for tightening Floor Anchors
- Hack saw/Mitre saw
- Hammer Drill (concrete bit)

### Instructions

1. Tiles to be installed with traffic direction perpendicular to the 17 5/8 in. length. We typically recommend a grid size of 3 ft x 3 ft or 4 ft x 5 ft.
2. Installation should be done on a non-abrasive resilient surface. Installing on an abrasive surface will mar the upper finish.
3. Place Debris Trap Tiles upside down.
4. Align male connector with female counterpart making sure they are correctly aligned. You cannot affix these tiles when they are off-set.
5. Using the rubber mallet, fully tap connection together. Assemble mat close to application site whenever possible. Do not try to roll assembled tiles.
6. If installing in a recess, place section in place. Whenever possible, do not cut tiles to less than 6 inches in length or width. Try to make any cuts between mat divider whenever possible.
7. Using mat dividers is recommended when coverage is larger than 3 tiles by 3 tiles (approximately 3' x 4.5'). This approach both reduces the risk of shrinkage complications as well as makes a manageably sized mat for maintenance purposes. Lay out Mat Dividers in desired grid pattern. Using hammer drill with New 1/4" Concrete Bit, drill holes in concrete using Mat Dividers as a template (Holes are Pre-Drilled in Dividers). Ensure holes are clean prior to tapping in Anchors. Tap in Anchors, align Mat Dividers and Tighten down Anchors with Philips Screwdriver.
8. If you wish to disconnect one tile from another, carefully use a hammer and punch to disassemble. This usually works best when staggering the connection point over an edge (mat upside down). Edgewood does not recommend disconnecting the tiles.

9. For surface mount, note that there are two options for edging system.
- Aluminum Ramp Edge – Black or clear anodized ( $\frac{1}{2}$ " thick x  $2\text{-}3\frac{3}{8}$ " x 12')
    - i. For Fastening the aluminum ramp, please follow the instructions used in point 7 for fastening the mat dividers.
  - Cart Smart Edge -Black PVC ( $\frac{1}{2}$ " thick x 3" x 12')
    - i. The cart smart edging can be adhered to the floor or anchored.

Note: Tile to be installed with Traffic Direction perpendicular to the  $17\frac{5}{8}$  in. length.



**Traffic Direction**